

Floodlight Halogen



- Designed to meet applicable marine requirements
- High light output
- Low weight

Application

Decks and hulls, industrial and sports areas, on shore buildings, life boats (FLH 500)

Design

Meet shock testing according to IEC 69-2-27 test Ea

Housing

Housing, mounting bracket and junction box in seawater resistant aluminium. Bolts and nuts of stainless steel

Finish

Powder coated white RAL 9016 and enamelled up to 70 - 80 µm thickness

Pane

Frame with safety glass and silicone gasket

Reflector

Narrow beam (NB) or wide beam (WB) light distribution

Electric

Flexible wiring, silicone insulated, heat resistant up to 180° C

Lamp base

R7s, E40



Light source

Halogen lamp (115V/230V) with R7s or E40 socket. 24V on request. Lamp included

Mounting

Adjustable bracket with three mounting holes, Ø 9mm

Cable entry

Cable gland M20

Termination

Screw Terminal 0.5 mm² to 4 mm²



Remarks, Options

Antidazzle shade
Swivel arm
Pendent mounting bracket
Bracket for crane

More variants are available on request. Complete assortment on www.glamox.com/gmo

Product	Part-No. 115V	Part-No. 230V	Weight kg	Lamp Code	Lamp Base	Light Distribution
FLH WB 300W	1105013	1105003	5,3	HDG	R7s	A
FLH WB 500W	1105015	1105005	5,3	HDG	R7s	
FLH WB 500W		1105054	5,3	HEGT	E40	B
FLH WB 1000W	1105017	1105007	5,3	HDG	R7s	
FLH WB 1000W		1105056	5,3	AGS	E40	
FLH NB 300W	1105014	1105004	5,3	HDG	R7s	C
FLH NB 500W	1105016	1105006	5,3	HDG	R7s	
FLH NB 500W		1105055	5,3	HEGT	E40	
FLH NB 1000W	1105018	1105008	5,3	HDG	R7s	
FLH NB 1000W		1105057	5,3	AGS	E40	

WB = Wide Beam, NB = Narrow Beam.

Spare Parts/ Accessories

Please specify compl. part no. of Floodlight for lamp holder compl. spare part

Lamp Base (See table)

Lamp (See table)

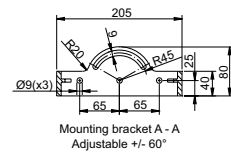
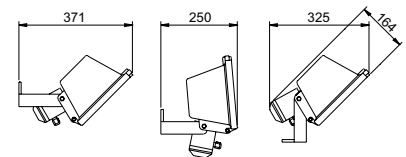
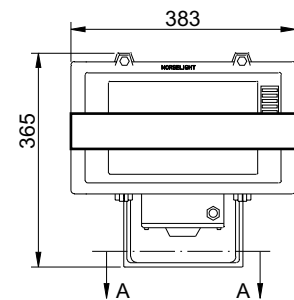
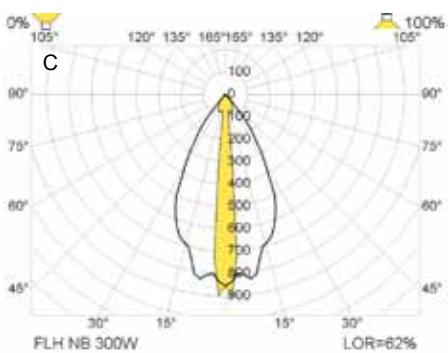
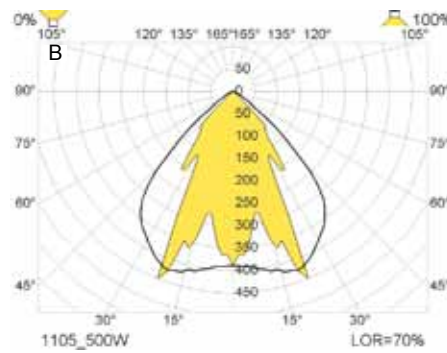
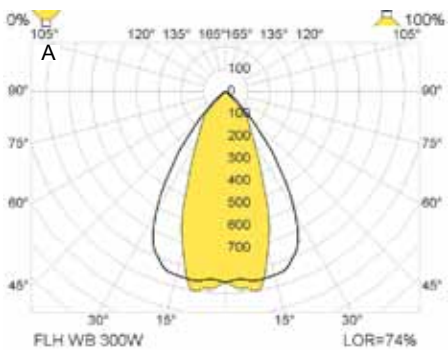
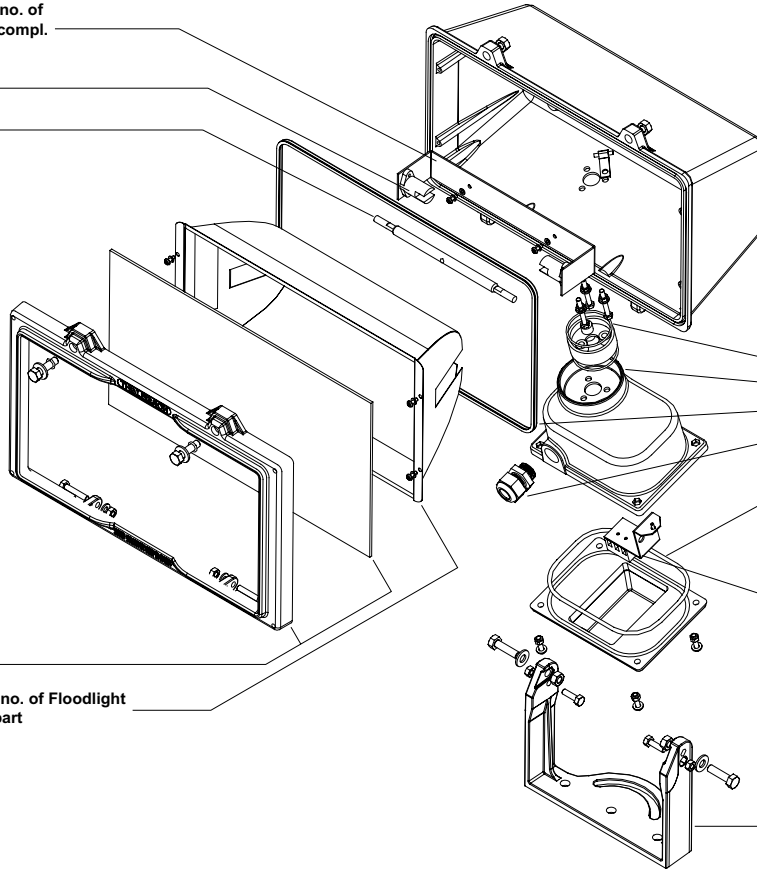
1009350 compl.

Please specify compl. part no. of Floodlight for reflector compl. spare part

1009352 Seal KIT

Please specify compl. part no. of Floodlight for connector spare part

1009351 compl.



Measurements are in mm