

Floodlight Metal Halid



- Designed to meet applicable marine requirements
- High light output
- Low weight

Application

Decks and hulls, industrial and sports areas

Design

Meet shock testing according to IEC 69-2-27 test Ea

Housing

Housing, mounting bracket and junction box in seawater resistant aluminium

Finish

Powder coated white RAL 9016 and enamelled up to 70 - 80 µm thickness

Pane

Frame with safety glass and silicone gasket

Reflector

Narrow beam (NB) or wide beam (WB) light distribution

Electric

Flexible wiring, silicone insulated, heat resistant up to 180° C

Lamp base

RX7, Fc2, E40

Light source

Metal halide lamp (Hl) 230V with E40 or Fc2 socket (Rx7 for 150W). Lamp is included

Mounting

Adjustable bracket with three mounting holes, Ø 9mm. Bolts and nuts of stainless steel

Cable entry

Cable gland M20x1.5

Termination

Screw Terminal 0.5 mm² to 4 mm²

Remarks, Options

Antidazzle shade
Swivel arm
Pendent mounting bracket
Bracket for crane



More variants are available on request. Complete assortment on www.glamox.com/gmo

Ballast unit to be ordered separately

Product	Part-No. F 230/50	Part-No. F 230/60	Part-No. For separate ballast unit E40	Part-No. For separate ballast unit Fc2	Weight kg	Lamp Code	Lamp Base	Light Distribution
FLM WB 150W	1105204	1105206			6.6	MD	RX7	A
FLM WB 250W			1105252	1105202	5.3	ME / MD	E40 / Fc2	
FLM WB 400W			1105250	1105200	5.3	MT / MD	E40 / Fc2	
FLM WB 800W			1105258	1105256	10.0	MT / MD	E40 / Fc2	
FLM NB 150W	1105205	1105207			6.6	MD	RX7	B
FLM NB 250W			1105253	1105203	5.3	ME / MD	E40 / Fc2	
FLM NB 400W			1105251	1105201	5.3	MT / MD	E40 / Fc2	
FLM NB 800W			1105259	1105257	10.0	MT / MD	E40 / Fc2	

WB = Wide Beam, NB = Narrow Beam.

Spare Parts/ Accessories

Please specify compl. part no. of Floodlight for lamp holder compl. spare part

Lamp Base (See table)

Lamp (See table)

1009350 compl.

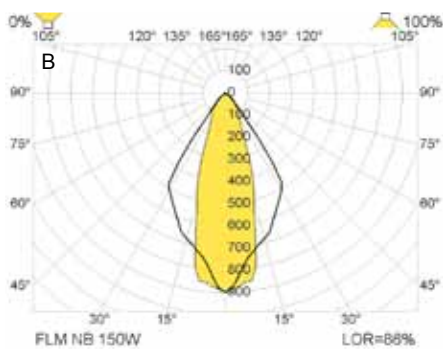
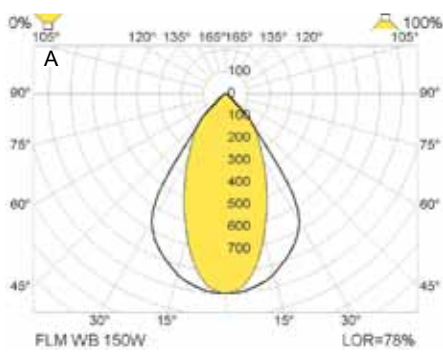
Please specify compl. part no. of Floodlight for reflector compl. spare part

1009352 Seal KIT

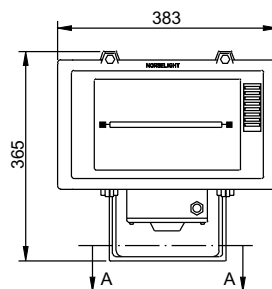
Please specify compl. part no. of Floodlight for connector spare part

Please specify compl. part no. of Floodlight for ignitor spare part

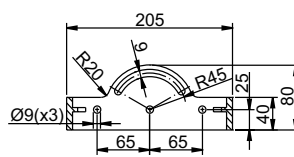
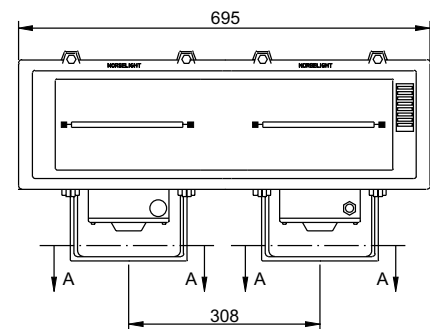
1009351 compl.



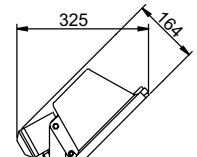
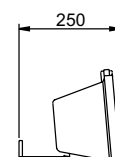
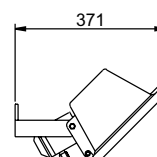
FLM 150-400W



FLM 800W



Mounting bracket A - A
Adjustable +/- 60°



Measurements are in mm