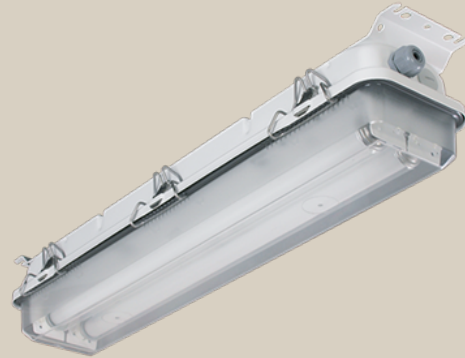


## Cold area

Freezing and cold room luminaires



Freezing and cold room luminaires are applicable for refrigerated areas, cold rooms and freezing rooms with an ambient temperature of min-35°C/ -40°C and max. +45°C, depending on the chosen light source. They are designed to meet maritime requirements.

Freezing and cold room luminaires with their flat design are easy to install and maintain. They are available with different housing.

## Cold area



1771 LED



MIL

---

## TECHNICAL DESCRIPTION

---



---

### MOUNTING

---

1771 to be mounted to ceiling plate. MIL to the ceiling or cable trays by screws. Different screwed mounting brackets, shock mounts or triangles are available for MIL.

---

### ELECTRIC

---

Magnetic ballast and electronic cold starter. G13 lamp holders. M20 or M25 cable glands available.

---

### HOUSING

---

1771 do have stainless steel base plate unpainted. MIL to be delivered in Aluzink housing (MILZ), or in acid proof stainless steel housing (MILS). MIL is powder painted white RAL9016.

---

### LIGHTSOURCE/OPTIC

---

Two T38 thermo tubes 18W or 36W. Clear polycarbonate diffuser