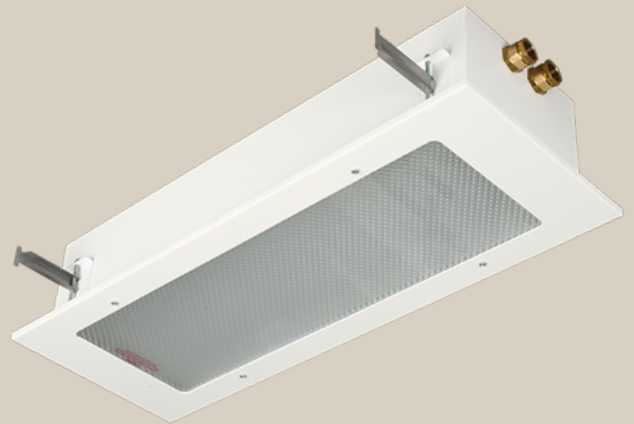


Explosion proof indoor Zone 1

Interior fixtures for hazardous areas , zone 1



Explosion proof interior lighting fixtures are applicable for hazardous areas, zone 1. They are designed according to rules of maritime classification societies and IEC standards.

Recessed interior lighting fixtures with frame designed for addaption to ceiling type are easy to install and maintain. Also models for surface mounting are available.

TECHNICAL DESCRIPTION

MOUNTING

Surface or recessed mounting with included suspension rails or adjustable swingarm brackets.

ELECTRIC

The fixtures will be delivered with electronic ballast and are available with battery backup with 90 or 180 minutes duration. GRX3 will have one gland 25 each end.

HOUSING

Steel powder coated white RAL 9016

LIGHTSOURCE/OPTIC

Available in different optics as high efficient softlight MIRO, micro prismatic or low luminance, with polycarbonate or hardened glass cover.

GRX3 has G13 lampholders for two tubes T8 18W or 36W.